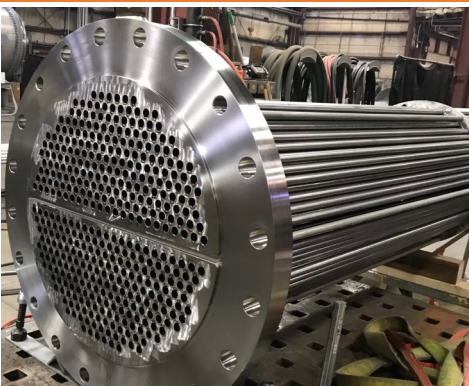


Custom Heat Transfer and Process Equipment



Specializing in Stainless Steel Fabrication

Including Duplex, AL6XN®, C276, Alloy 400, Titanium, Super Duplex, Inconel...



Why Choose Paget Equipment?

Safety — Quality — Performance



Since 1976, Paget Equipment is located in the heart of Wisconsin within the city of Marshfield. Wisconsin's diverse background in industrial manufacturing and metal fabrication provides the backdrop for our success.

Situated on approximately 9.2 acres, we have over 56,000 sq. ft. of state-of-the-art fabrication space including lifting capabilities of up to 360,000 pounds. In this area we have multiple metal forming stations, equipment and capabilities.

Our craftsmen utilize a wide assortment of fabricating equipment allowing us to efficiently and cost effectively turn custom designs into reality. The size range of what we build can be as small as hand carried short production run items to large specialized equipment beyond the limits of roadway permitting.



The Facts:

- **Location:** Marshfield, WI
- **Opened:** 1976
- **Facility Acres:** 9.2
- **Design Certifications:** ASME, TEMA, API, CRN, B31.3 and ...
- **Fabrication Space:** 56,000 sq. ft.
- **Engineering:** Full in-house staff that is capable of simplifying your complex needs.
- **Weld Procedure:** 80 weld procedures and growing
- **QA/QC:** Experienced in-house certified personal plus third-party inspector.

Markets and Experience

Markets

Paget Equipment has been supplying vessels and tanks into a wide variety of markets and helping our customers achieve the impossible. Our vessels can be found throughout North America and we are proud that our quality has allowed us to grow over many decades.

- Water Safety
- Ethanol & Bio-Fuel
- Petrochemical
- Oil and Gas
- Mining and Minerals
- Energy and Cogeneration
- Cement and Asphalt
- Chemical and Fertilizer
- Government
- Industrial Solutions



Fabrication Capabilities

Our craftsmen fabricators are second to none. Each team diligently fabricates the equipment and is responsible from barrel construction – feature layout – joint preparation – part joining – hydrostatic testing – cleaning – shipment. This is different than most manufacturing processes and ensures that our equipment fabrications have a high degree of quality and ownership by our team.

- Diameter: Up to 15 ft.
- Length: Over 100 ft.
- Up to 360,000 lb.
- Up to 44 ft. Under hook



Alloys

- Monel
- Inconel
- AL6XN®
- Nickel
- Titanium
- Aluminum
- Hastelloy
- 300 series Stainless Steels
- Carbon Steel (Low Temp, Low Residual Elements)
- Duplex and Super Duplex Stainless Steels adhering to API-938 C
- Zirconium



Code Vessels & Equipment



ASME Shell & Tube Heat Exchangers

Shell and tube heat exchangers are widely used as a means to transfer thermal energy from one medium to another without mixing. Two fluids enter the exchanger, each at a different temperature and pressure, through either the shell (around the tubes) or in the tubes. Shell and tube heat exchangers are available in a variety of configurations, passes, and flow arrangements fabricated to ASME Code and TEMA Standards.



Columns

Columns are used to separate a liquid or vapor mixture into component fractions of desired purity by adding or removing heat. Typically these utilize trays, random packing or structured packing internals.



ASME Pressure Vessels / API Tanks

Pressure vessels are used to describe a wide variety of equipment. They are designed to handle pressure and temperature these vessels are used in all types of industries. These vessels are extremely useful whether your need is to agitate, hold heat, store, or chemically change the medium.



Process Piping / Pipe Spools

B31.3 piping configurations are pre-manufactured within our facility following a series of cutting, beveling, welding and other processes. Fabricating a turnkey piping solution will save on-site cost and ensure that the testing and certification are completed.

Chillers & Heaters

ASME jacked vessels can be used for both heating or cooling the media. There are several different ways to construct the vessel depending on the media, market or application. Paget Equipment has manufactured all the different types for a wide variety of customers and applications.



Evaporators & Crystallizers

Evaporators are essential pieces of equipment for most processes. They are a specialized configuration of a shell and tube heat exchanger. The shell and tube types that we build can generally be categorized as either falling film or forced circulation.



Separators

Separators, as the name implies, provide a means of separating vapor from liquid. This process is usually performed under a controlled vacuum to reduce the boiling point. The vapor/liquid mixture enters through the side of the separator in such a way as to promote swirling. This swirling action provides a means to release vapors from droplets. These vapors are drawn off to be collected.



Skids and Platforms

Skids and modules are used in many industries and are built to support the main equipment and various components that attach to it such as pumps, piping, and controls. Often these skids are sized such that fabricators can build and shop fit them together as modules prior to installation at the jobsite. Skids and modules are custom made based on the equipment weight, site location and the applicable building codes.



Engineering Capabilities

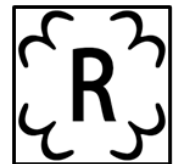
Our highly experienced engineering and design team offers a wide variety of experience and capabilities to design, create calculations, and define specifications for your process equipment to meet the requirements of ASME, TEMA, API, or other applicable code of vessel construction.

Utilizing innovative software programs, we also insure that your equipment meets appropriate wind conditions, seismic conditions and construction codes such as ASCE, IBC or UBC. Drawing capabilities include both 2D and 3D platforms.

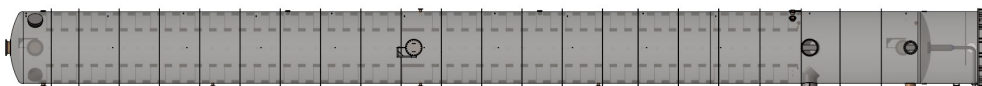


We design using a wide range of codes:

- ASME B and PV Section VIII, Division 1, "U" Stamps
- ASME B31.3, Process Piping
- TEMA Class B, C, & R
- National Board NB & R
- Pressure Equipment Directive, "CE" Stamp
- API 650, "API" Stamp
- Canadian Registration Compliant for all Provinces of Canada (CRN)
- Issued over 29,000 U-stamps since 1990

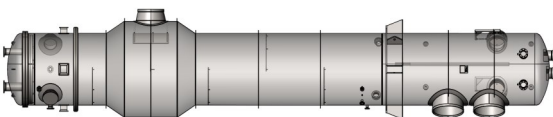


Our engineering team stays involved in your project throughout its life keeping you updated on the progress and making sure your quality standards are met every step of the way. The focus given to every project is designed to cost efficiently produce a quality product on schedule. When we fabricate your project, you will always know its status.



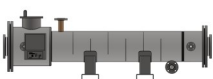
Large Vessels

(Up to 100 ft+ by 15ft Diameter)



Mediums Vessels

(Up to 50 ft+ by 10ft Diameter)



Small Vessels

(Up to 6 ft+ by 3ft Diameter)

Quality and Compliance

Paget Equipment Company is committed to meeting all of the requirements of the ASME Boiler & Pressure Vessel Code and the quality control system within our manual in accordance with ASME Section VIII Division 1.

All welders at Paget Equipment are ASME Certified. Paget Equipment has over 80 different weld procedures that have been qualified from carbon steel to exotic alloys.

Documentation Packages

Quality is driven by expectations, repeatability and organization. Paget Equipment provides an organized collections of customer defined documents.

- **Material Test reports (MTR)**
- **Welder Traceability**
- **Weld Procedures**
- **Certifications or reports for testing**
- **Certified drawings and calculations**
- **Compliance Certifications**
- **Welder Qualifications**
- **Certifications or performed processes**



Factory Testing and Services

Paget Equipment offers a complete variety of testing and services needed to meet or exceed the ASME compliance requirements.

- **Visual inspection during fabrication**
- **Full blast and lining profile measuring**
- **Radiographic Testing (RT)**
- **Hardness Testing**
- **Impact Testing**
- **Leak Testing**
- **Dye Penetrant Testing (PT)**
- **Positive Material Identification (PMI)**
- **Ultrasonic Testing (UT)**
- **Dry Film Thickness testing (DFT)**
- **Magnetic Particle Testing (MT)**
- **State and "A" endorsed third party inspector (HSB-CT)**
- **Ferrite Testing (FT)**





<https://facebook.com/pagetequipment/>



<https://linkedin.com/company/paget-equipment-co>

417 E 29th Street, Marshfield, WI 54449
Phone: (715) 384-3158 | Fax: (715) 387-0720
Website: www.pagetequipment.com
Email: info@pagetequipment.com